



GAT MONTHLY MEMBERSHIP PROGRESS REPORT

Results as of: 1/31/2021

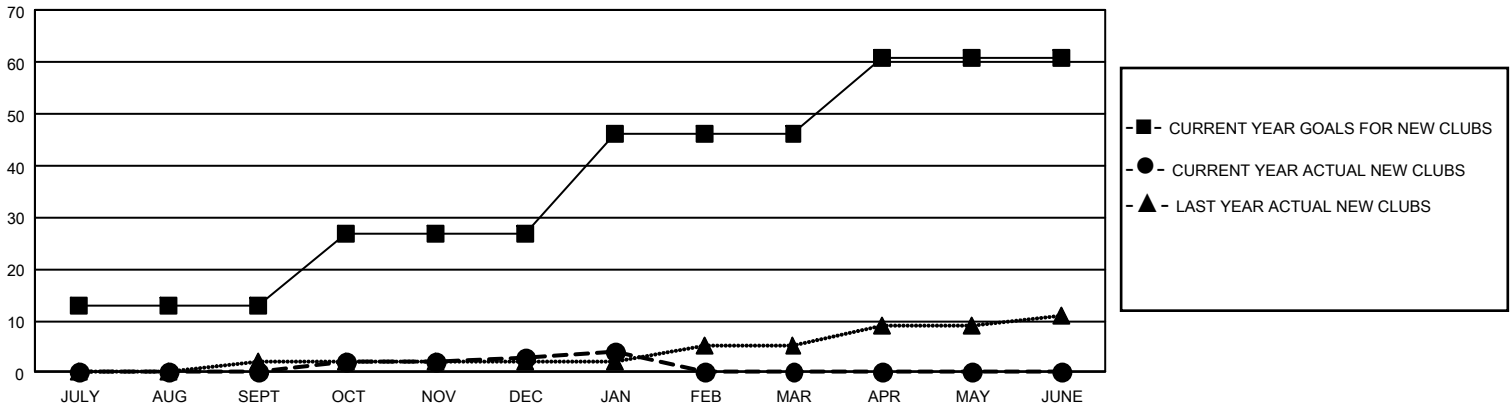
GAT Constitutional Area 5 - Japan

REPORT DOES NOT INCLUDE CLUBS IN UNDISTRICTED AREAS.

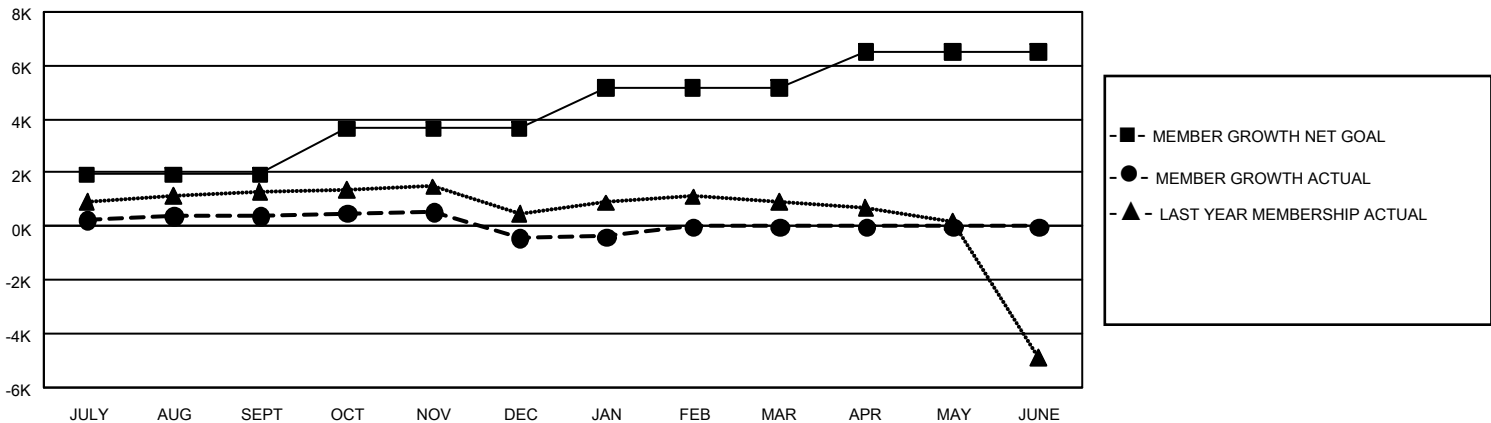
Clubs			
RESULTS FOR 2020-2021			
QUARTER	NEW CLUB GOAL	NEW CLUBS	DROPPED CLUBS
JULY/AUG/SEPT	39	0	5
OCT/NOV/DEC	42	3	12
JAN/FEB/MAR	57	1	2
APR/MAY/JUNE	45	0	0

Members			
RESULTS FOR 2020-2021			
QUARTER	MEMBER GROWTH NET GOAL	MEMBER GROWTH ACTUAL	DROPPED MEMBERS ACTUAL (including transfers)
JULY/AUG/SEPT	1924	2,283	1,798
OCT/NOV/DEC	1716	1,380	2,107
JAN/FEB/MAR	1538	520	433
APR/MAY/JUNE	1337	0	0

GOALS AND ACTUAL NEW CLUBS CUMULATIVE



GOALS AND ACTUAL MEMBERS CUMULATIVE



DROPPED CLUBS: 19	1,585 CLUBS OF 2,911 ADDED 1 OR MORE NEW MEMBERS CLICK HERE FOR CUMULATIVE MEMBERSHIP DATA	GENDER DISTRIBUTION	
		MALE 80,615 (76.20%) FEMALE 25,183 (23.80%)	TOTAL FAMILY UNIT MEMBERS 38,052 FAMILY MEMBERS PAYING HALF DUES 20,938
DROPPED MEMBERS			
DECEASED 508 CLUB CANCELLED 32 OTHER 3,796 TOTAL 4,336			